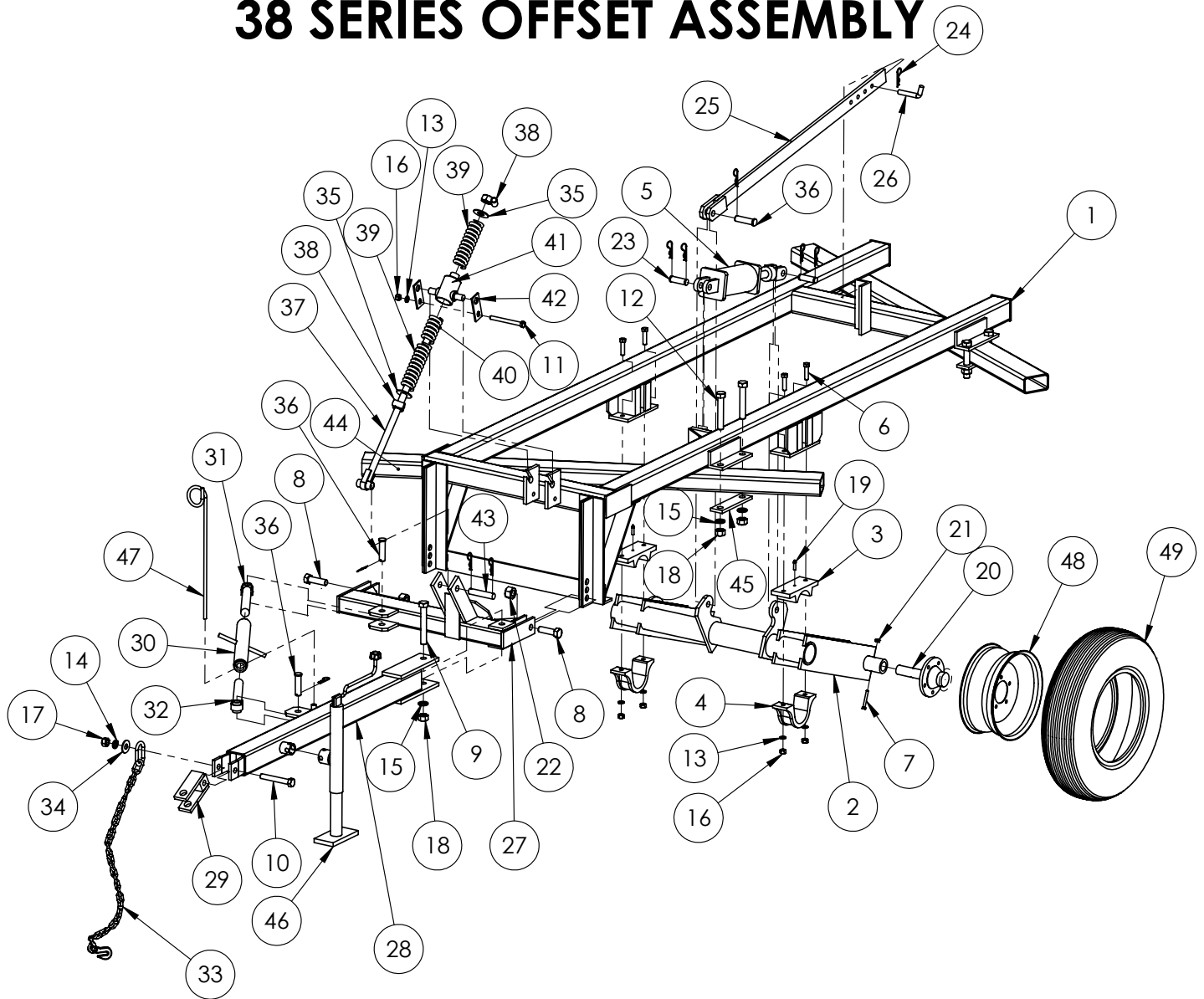


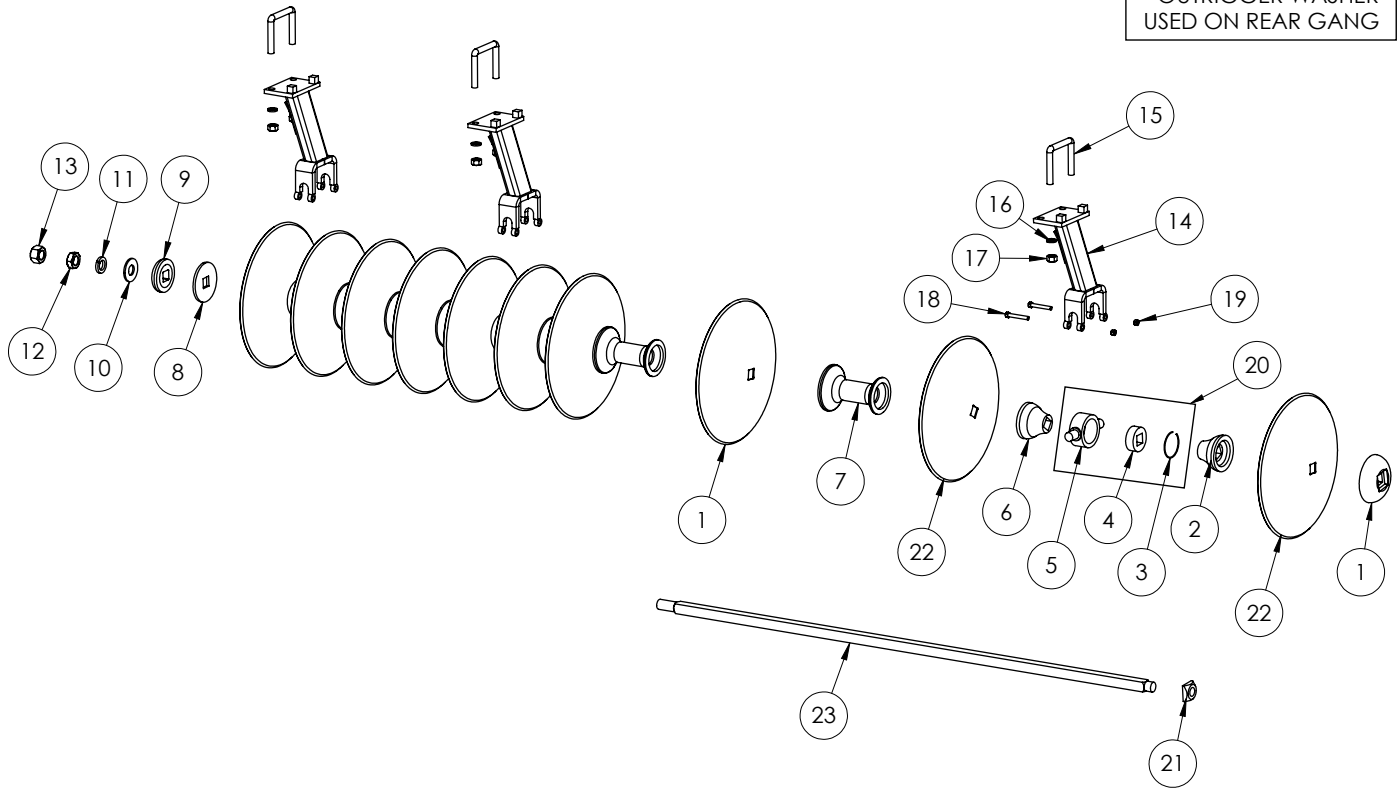
38 SERIES OFFSET ASSEMBLY



ITEM NO.	PART NUMBER	DESCRIPTION
1	15789	38 OFFSET FRAME WELDMENT
2	15790	WHEEL CARRIAGE WELDMENT
3	T-58	WHEEL CARRIAGE BEARING TOP
4	T-57	WHEEN CARRIAGE BEARING BOTTOM
5	10610	CYLINDER
6	9192	HEX BOLT, 5/8" X 2 1/2" GR. 5
7	14221	BAND SCREW
8	T-780	HEX BOLT, 1" X 3 1/2" GR. 5
9	13254	HEX BOLT, 1" X 7" GR. 5
10	15567	HEX BOLT, 7/8" X 6" GR. 5
11	T-749	HEX BOLT, 5/8" X 6 1/2" GR. 5
12	15349	HEX BOLT, 1" X 6" GR. 5
13	T-24	LOCK WASHER, 5/8"
14	T-21	LOCK WASHER, 7/8"
15	T-34	LOCK WASHER, 1"
16	T-22	HEX NUT, 5/8"
17	T-19	HEX NUT, 7/8"
18	T-18A	LOCK NUT, 1"
19	12511	EXTENDED GREASE FITTING
20	13630	SPINDLE & HUB ASSY.
21	12899	FLANGE LOCKNUT, 3/8"
22	T-18A	LOCK NUT, 1 1/8"
23	15374	CYLINDER PIN
24	9979	COTTOR HAIR PIN
25	15791	DEPTH CONTROL BAR
26	9690	DEPTH CONTROL PIN
27	11378	DRAWBAR WELDMENT
28	11380	TONGUE WELDMENT
29	T-2665	TONGUE CLEVIS WELDMENT
30	9876	TURNBUCKLE BARRELL 24"
31	11470	LH ADJUSTING SCREW, 12"
32	11469	RH ADJUSTING SCREW, 12"
33	15186	SAFETY CHAIN
34	15569	FLAT WASHER, 7/8"
35	T-698	FLATWASHER, 1 1/8"
36	13311	PIN, 1" X 3 1/2"
37	11596	LEVELING ROD SCREW, 31"
38	T-699	WING NUT
39	T-509	ADJUSTING SPRING 8 1/2"
40	T-511	ADJUSTING SPRING 4 1/2"
41	T-510	SPRING HOUSING
42	9006	RETAINER STRAP
43	T-934	PIN, 1" X 5"
44	T-1003	GANG BEAM SEE CHART
45	15792	GANG STRAP
46	T-933	TONGUE JACK
47	T-465	HOSE HOLDER
48	T-612	RIM
49	95L156T	TIRE

38 OFFSET GANG ASSEMBLY

 1
 T-OR15
 OUTRIGGER WASHER
 USED ON REAR GANG



REF NO.	PART NO.	DESCRIPTION
1	T-491	BUMPER WASHER, 1 1/2" SQ
2	T-495	END SPACER, 1 1/2" SQ X 3 7/8" (FOR 9" SP.)
	T-106	END SPACER, 1 1/2" SQ X 3 7/8" (FOR 10 1/2" SP.)
3	T-729	SNAP RING, 4"
4	T-604IP	BEARING, 1 1/2" SQ
5	TMD	TRUNNION BEARING HOUSING, 1 1/2"
6	T-495	END SPACER, 1 1/2" SQ X 3 7/8" (FOR 9" SP.)
	T-105	END SPACER, 1 1/2" SQ X 4 1/2" (FOR 10 1/2" SP.)
7	T-103	SPACER SPOOL, 9" SPACING
	T-104	SPACER SPOOL, 10 1/2" SPACING
8	15376	1 1/2" SPACER WASHER
9	T-492	END WASHER, 1 1/2"
10	T-605	FLATWASHER, 1 1/2"
11	T-728	LOCK WASHER, 1 1/2"
12	9472	JAM NUT, 1 1/2"
13	T-727A	LOCK NUT, 1 1/2"
14	12166	TUBE GANG HANGER
15	11975	U-BOLT, 7/8"
16	T-21	LOCKWASHER, 7/8"
17	T-19	HEX NUT, 7/8"
18	12163	HEX BOLT, 1/2" X 3 1/2" GR. 5
19	9226	HEX SELF LOCKING FLANGE NUT, 1/2"
20	TMDT604IP	HOUSING & BEARING ASSEMBLY
21	11397	OUTRIGGER NUT, 1 1/2"
22	3-22177-1	22" X .177" DISC BLADE SMOOTH
23	15717	AXLE, 1 1/2" X 87 1/2"

38 OFFSET BLADES AND AXLES

REF. #21 DISC BLADES

PART NUMBER	HOLE SIZE	DIAMETER	THICKNESS	CUTOUT/ PLAIN
3-22177-1	1 1/2"	22"	0.177	PLAIN
3-22177-2	1 1/2"	22"	0.177	CUTOUT
3-24256-1	1 1/2"	24"	0.256	PLAIN
3-24256-2	1 1/2"	24"	0.256	CUTOUT
3-26256-1	1 1/2"	26"	0.256	PLAIN
3-26256-2	1 1/2"	26"	0.256	CUTOUT

REF. #22 1 1/2" AXLES

PART NUMBER	# OF BLADES	SPACING	LENGTH
9879	4	9"	34 1/8"
9880	5	9"	43 1/4"
9881	6	9"	52 3/4"
9882	7	9"	61 3/4"
9883	8	9"	70 3/4"
9869	4	10 1/2"	37 5/8"
9870	5	10 1/2"	48 1/4"
9871	6	10 1/2"	58 3/4"
9872	7	10 1/2"	68 3/4"
9873	8	10 1/2"	79 5/8"